

# New Product Release



**Plus Opto Ltd**  
B13, Derwent Court, William Way  
Moss Ind Est. Leigh, WN7 3PT  
Tel: 01942 671122  
Fax: 01942 671133  
E-mail: [sales@plusopto.co.uk](mailto:sales@plusopto.co.uk)  
Web: [www.plusopto.co.uk](http://www.plusopto.co.uk)

## LED Drivers & Controllers

We now have available an extensive range of LED Drivers & Controllers for the reliable drive & control of LED lighting products.

These products complement our range of strips, clusters, modules and fittings.

Constant Voltage and Constant Current 350 /700mA outputs are supported in PWM input or DMX



## Mini- Controllers



### ARC3001 Mini-Controller PWM 3-Channel Constant Voltage

- Supply voltage 12v ~ 48v
- 2A/Channel. Expandable using additional drivers
- 13 built in lighting effects set by DIP Switches
- 1 user defined lighting effect
- 16 adjustable lighting speeds/brightness
- 256 levels of gray scale with smooth colour transition



### ARC3002-W Mini-Controller PWM 12-Channel Constant Voltage

- Supply voltage 12v ~ 48v
- 2A/Channel total 24A
- IP66 rated
- 1 built in lighting effect
- 1 user defined lighting effect
- 4096 levels of gray scale with smooth colour transition



### ARC3003-W Mini-Controller PWM 3-Channel Constant Voltage

- Supply voltage 12v ~ 48v
- 2A/Channel total 6A Expandable using additional drivers
- IP66 rated
- 1 built in
- 1 user defined lighting effect
- Cascade up to 32 units to drive up to 96 channels



### ARC3004-W Mini-Controller PWM 12-Channel Constant Voltage

- Supply voltage 12v ~ 48v
- 2A/Channel
- IP66 rated
- 16 Lighting Effects
- 8 built in and 8 user defined lighting effect
- Cascade up to 32 units to drive up to 96 channels
- Supports RF control module ARC5900



## LED Drivers PWM

The range of PWM drivers are designed to be used in conjunction with ARC lighting controllers types ARC3010, ARC3002 and ARC3003 along with our range of RF remote controllers. For operation from 230v ac mains supply a DC power supply is required, this may be selected from our range of constant voltage units depending on the LED voltage and total power rating.



### ARC3710-Wx series Constant Voltage PWM Driver

- Supply voltage (W0) 12v ~ 40v or (W1) 25v ~ 48v
- 3-Channel Constant Voltage 2A/Channel
- Expandable up to 100 drivers
- IP66 rated



### ARC3960-Wx series Constant Current PWM Driver

- Supply voltage (W0) 12v ~ 24v or (W1) 25v ~ 48v
- 3-Channel Constant Current 350mA
- Expandable up to 100 drivers
- IP66 rated



### ARC3961-Wx series Constant Current PWM Driver

- Supply voltage 12 ~ 24v or 25v ~ 48v
- 3-Channel Constant Current 700mA
- Expandable up to 100 drivers
- IP66 rated

The driver range requires additional dc power supplies to operate from 230vac mains supply.

## LED Drivers DMX

The range of DMX drivers are designed to be used in conjunction with ARC lighting controllers types ARC3010 and ARC5010. For operation from 230v ac mains supply a DC power supply is required, this may be selected from our range of constant voltage units depending on the LED voltage and total power rating.



### ARC3610-Wx series Constant Voltage DMX Driver

- Supply voltage (W0) 12v ~ 40v or (W1) 25v ~ 48v
- 3-Channel Constant Voltage 2A/Channel
- 8-bit output 256 gray scales
- Auto Addressing Technology
- IP66 rated
- Transmission distance up to 100M



### ARC3801-Wx series Constant Current DMX Driver

- Supply voltage (W0) 12v ~ 24v or (W1) 25v ~ 48v
- 3-Channel Constant Current 350mA
- 8-bit output 256 gray scales
- Expandable up to 170 drivers
- Auto Addressing Technology
- IP66 rated



### ARC3802-Wx series Constant Current DMX Driver

- Supply voltage (W0) 12v ~ 24v or (W1) 25v ~ 48v
- 3-Channel Constant Current 700mA
- 8-bit output 256 gray scales
- Expandable up to 170 drivers
- Auto Addressing Technology
- IP66 rated



### ARC3730-W Multi Channel DMX Converter

- Supply voltage 12v ~ 40v
- Converts DMX in to SPI control signals for MBI6020/6030 3-channel 16-bit PWM
- Supports 128 pixels
- Auto Addressing Technology
- IP66 rated

## DMX Lighting Controller

### ARC3010-B0

This user-friendly DMX controller is designed for programming full colour LED lighting effects. The Colourmaker suits applications in architectural lighting, advertising, signage and decorative lighting.



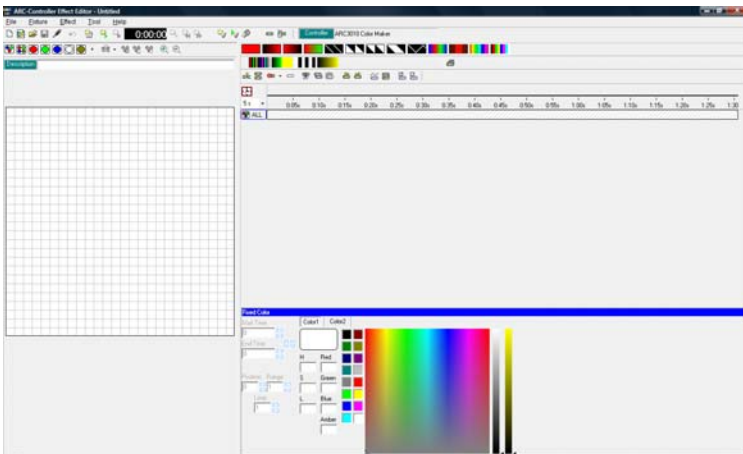
#### Features

- Standard or advanced DMX512 protocol
- 256 RGB pixels
- 16 Built in effects,
- 16 User Defined effects
- IR remote control
- USB 2.0 or RS485 computer interface

The controller Includes Lightshow pixel Software, USB Cable, Remote Control and Power Supply Use in conjunction with ARC3610 and ARC3801 DMX driver series

## LightShow pixel Software

LightShow Pixel is the lighting effects edit and control software of the ARC3010 DMX controller. The software employs the USB communication ports of the Control PC for communication



#### Features

- Program RGB, RGBA, Red, Green, Blue, White and Amber light fixtures.
- Designate colour, location and description.
- Employs time axis to indicate lighting effects & display real-time colors.
- Maximum 200 different lighting effects/fixture.
- Maximum of 768 channels grey scale /fixture.
- Maximum of 100 user-defined lighting effect pictures.

For further detailed information please contact our office

## LED Dimmers



### ARC5701 Constant Voltage Dimmer

- Supply voltage 12v ~ 30vdc
- 4-Channel dimming 2.5A/ Channel
- Dimming via Switch, Rotary control or 1-10v RF remote.
- Compatible with ARC5600 RF Module and hand held transmitter with multi/single loop control
- Dimensions 138x34x22mm



### ARC5506 Constant Current Dimmer

- Supply voltage 100 ~ 240v 50~60Hz ac mains
- Single Channel dimming output 3v~24vdc
- Selectable output current 0.6A to 1.2A in 16 levels
- Dimming via Switch, Rotary control or 1-10v RF remote.
- Compatible with ARC5600 RF Module and hand held transmitter with multi/single loop control
- Dimensions 205x50x33mm



### ARC5507 Constant Current Dimmer

- Supply voltage 100 ~ 240v 50~60Hz ac mains
- Single Channel dimming output 3v~12vdc
- Selectable output current 1.35A to 2.45A in 16 levels
- Dimming via Switch, Rotary control or 1-10v RF remote.
- Compatible with ARC5600 RF Module and hand held transmitter with multi/single loop control
- Dimensions 205x50x33mm



### ARC5600 RF Remote Control Module

- Designed for ARC5506 /5507 Dimmer products
- Supply voltage 15v~40vdc
- Multi-Single loop control – maximum 4 loops
- Output signal 0-10v max 20mA
- 12-level brightness dimming
- Transmitter dimensions 121x46x25mm
- Receiver dimensions 138x44x22mm

Specifications may be subject to change without notice