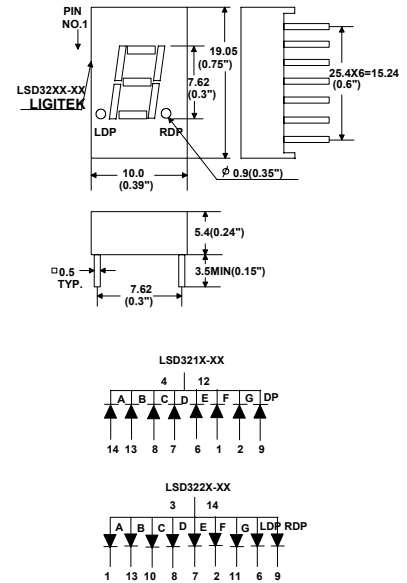


LED Displays Numeric 7-segment

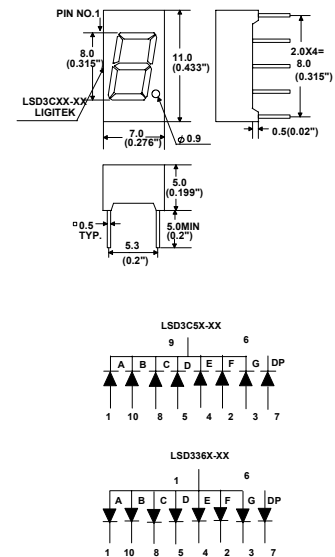
Single Digit Display 0.3"

| PART NO | | CHIP | | λ_P (nm) | Vf(v) @ 20mA | | Iv(mcd) @ 10mA | |
|------------|-----|-----------|------------|------------------|--------------|-----|----------------|-----|
| | | material | emitted | | Min | Max | Min | Typ |
| LSD3211-XX | C.C | GaP | Red | 697 | 1.7 | 2.8 | 1.5 | 2.5 |
| LSD3212-XX | | GaP | Green | 565 | 1.7 | 2.8 | 2.2 | 3.8 |
| LSD3214-XX | | GaAsP/GaP | Hi-Eff Red | 635 | 1.7 | 2.8 | 2.5 | 4 |
| LSD3215-XX | | GaAlAs | Super Red | 660 | 1.5 | 2.4 | 5.9 | 9.8 |
| LSD3213-XX | | GaAsP/GaP | Yellow | 585 | 1.5 | 2.4 | 2.7 | 4.5 |
| LSD3221-XX | C.A | GaP | Red | 697 | 1.7 | 2.8 | 1.5 | 2.5 |
| LSD3222-XX | | GaP | Green | 565 | 1.7 | 2.8 | 2.2 | 3.8 |
| LSD3224-XX | | GaAsP/GaP | Hi-Eff Red | 635 | 1.7 | 2.8 | 2.5 | 4 |
| LSD3225-XX | | GaAlAs | Red | 660 | 1.7 | 2.8 | 5.9 | 9.8 |
| LSD3223-XX | | GaAsP/GaP | Yellow | 585 | 1.5 | 2.4 | 2.7 | 4.5 |



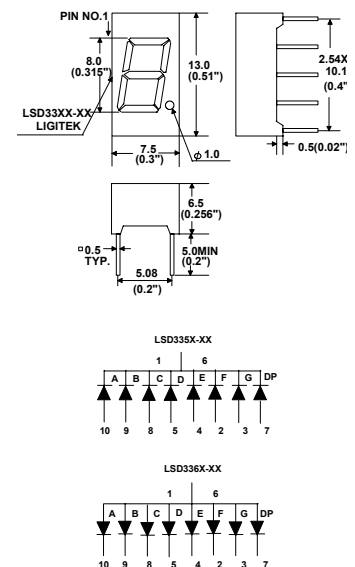
Single Digit Display 0.32"

| PART NO | | CHIP | | λ_P (nm) | Vf(v) @ 20mA | | Iv(mcd) @ 10mA | |
|------------|-----|-----------|------------|------------------|--------------|-----|----------------|-----|
| | | material | emitted | | Min | Max | Min | Typ |
| LSD3C51-XX | C.C | GaP | Red | 697 | 1.7 | 2.8 | 1.5 | 2.5 |
| LSD3C52-XX | | GaP | Green | 565 | 1.7 | 2.8 | 2.2 | 3.8 |
| LSD3C54-XX | | GaAsP/GaP | Hi-Eff Red | 635 | 1.7 | 2.8 | 2.5 | 4 |
| LSD3C55-XX | | GaAlAs | Super Red | 660 | 1.5 | 2.4 | 3.5 | 5.5 |
| LSD3C53-XX | | GaAsP/GaP | Yellow | 585 | 1.5 | 2.4 | 2.5 | 4 |
| LSD3C61-XX | C.A | GaP | Red | 697 | 1.7 | 2.8 | 1.5 | 2.5 |
| LSD3C62-XX | | GaP | Green | 565 | 1.7 | 2.8 | 2.2 | 3.8 |
| LSD3C64-XX | | GaAsP/GaP | Hi-Eff Red | 635 | 1.7 | 2.8 | 2.5 | 4 |
| LSD3C65-XX | | GaAlAs | Red | 660 | 1.7 | 2.8 | 3.5 | 5.5 |
| LSD3C63-XX | | GaAsP/GaP | Yellow | 585 | 1.5 | 2.4 | 2.5 | 4 |



Single Digit Display 0.32"

| PART NO | | CHIP | | λ_P (nm) | Vf(v) @ 20mA | | Iv(mcd) @ 10mA | |
|------------|-----|-----------|------------|------------------|--------------|-----|----------------|-----|
| | | material | emitted | | Min | Max | Min | Typ |
| LSD3351-XX | C.C | GaP | Red | 697 | 1.7 | 2.8 | 1.5 | 2.5 |
| LSD3352-XX | | GaP | Green | 565 | 1.7 | 2.8 | 2.2 | 3.8 |
| LSD3354-XX | | GaAsP/GaP | Hi-Eff Red | 635 | 1.7 | 2.8 | 2.5 | 4 |
| LSD3355-XX | | GaAlAs | Super Red | 660 | 1.5 | 2.4 | 3.5 | 5.5 |
| LSD3353-XX | | GaAsP/GaP | Yellow | 585 | 1.5 | 2.4 | 2.5 | 4 |
| LSD3361-XX | C.A | GaP | Red | 697 | 1.7 | 2.8 | 1.5 | 2.5 |
| LSD3362-XX | | GaP | Green | 565 | 1.7 | 2.8 | 2.2 | 3.8 |
| LSD3364-XX | | GaAsP/GaP | Hi-Eff Red | 635 | 1.7 | 2.8 | 2.5 | 4 |
| LSD3365-XX | | GaAlAs | Red | 660 | 1.7 | 2.8 | 3.5 | 5.5 |
| LSD3363-XX | | GaAsP/GaP | Yellow | 585 | 1.5 | 2.4 | 2.5 | 4 |

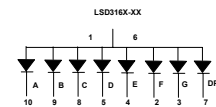
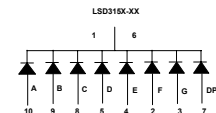
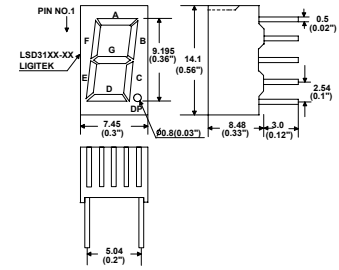


Displays are supplied bin graded and luminous intensity values may be higher in production

LED Displays Numeric 7-segment

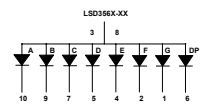
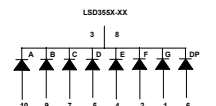
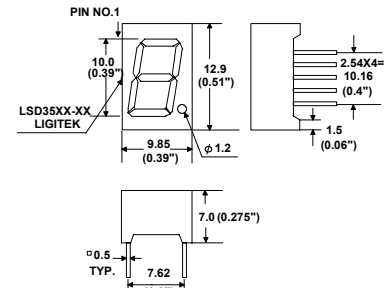
Single Digit Display 0.36"

| PART NO | | CHIP | | λ_P (nm) | Vf(v) @ 20mA | | Iv(mcd) @ 10mA | |
|------------|-----|-----------|------------|------------------|--------------|-----|----------------|-----|
| | | material | emitted | | Min | Max | Min | Typ |
| LSD3151-XX | C.C | GaP | Red | 697 | 1.7 | 2.8 | 1.5 | 2.5 |
| LSD3152-XX | | GaP | Green | 565 | 1.7 | 2.8 | 2.2 | 3.8 |
| LSD3154-XX | | GaAsP/GaP | Hi-Eff Red | 635 | 1.7 | 2.8 | 2.5 | 4 |
| LSD3155-XX | | GaAlAs | Super Red | 660 | 1.5 | 2.4 | 3.5 | 5.5 |
| LSD3153-XX | | GaAsP/GaP | Yellow | 585 | 1.5 | 2.4 | 2.5 | 4 |
| LSD3161-XX | C.A | GaP | Red | 697 | 1.7 | 2.8 | 1.5 | 2.5 |
| LSD3162-XX | | GaP | Green | 565 | 1.7 | 2.8 | 2.2 | 3.8 |
| LSD3164-XX | | GaAsP/GaP | Hi-Eff Red | 635 | 1.7 | 2.8 | 2.5 | 4 |
| LSD3165-XX | | GaAlAs | Red | 660 | 1.7 | 2.8 | 3.5 | 5.5 |
| LSD3163-XX | | GaAsP/GaP | Yellow | 585 | 1.5 | 2.4 | 2.5 | 4 |



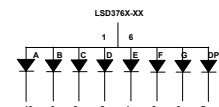
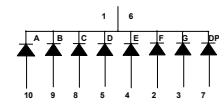
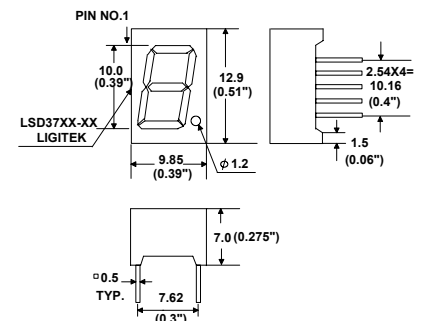
Single Digit Display 0.39"

| PART NO | | CHIP | | λ_P (nm) | Vf(v) @ 20mA | | Iv(mcd) @ 10mA | |
|------------|-----|-----------|------------|------------------|--------------|-----|----------------|-----|
| | | material | emitted | | Min | Max | Min | Typ |
| LSD3551-XX | C.C | GaP | Red | 697 | 1.7 | 2.8 | 1.5 | 2.5 |
| LSD3552-XX | | GaP | Green | 565 | 1.7 | 2.8 | 2.2 | 3.8 |
| LSD3554-XX | | GaAsP/GaP | Hi-Eff Red | 635 | 1.7 | 2.8 | 2.5 | 4 |
| LSD3555-XX | | GaAlAs | Super Red | 660 | 1.5 | 2.4 | 4 | 7 |
| LSD3553-XX | | GaAsP/GaP | Yellow | 585 | 1.5 | 2.4 | 2.5 | 4 |
| LSD3561-XX | C.A | GaP | Red | 697 | 1.7 | 2.8 | 1.5 | 2.5 |
| LSD3562-XX | | GaP | Green | 565 | 1.7 | 2.8 | 2.2 | 3.8 |
| LSD3564-XX | | GaAsP/GaP | Hi-Eff Red | 635 | 1.7 | 2.8 | 2.5 | 4 |
| LSD3565-XX | | GaAlAs | Red | 660 | 1.7 | 2.8 | 4 | 7 |
| LSD3563-XX | | GaAsP/GaP | Yellow | 585 | 1.5 | 2.4 | 2.5 | 4 |



Single Digit Display 0.39"

| PART NO | | CHIP | | λ_P (nm) | Vf(v) @ 20mA | | Iv(mcd) @ 10mA | |
|------------|-----|-----------|------------|------------------|--------------|-----|----------------|-----|
| | | material | emitted | | Min | Max | Min | Typ |
| LSD3751-XX | C.C | GaP | Red | 697 | 1.7 | 2.8 | 1.5 | 2.5 |
| LSD3752-XX | | GaP | Green | 565 | 1.7 | 2.8 | 2.2 | 3.8 |
| LSD3754-XX | | GaAsP/GaP | Hi-Eff Red | 635 | 1.7 | 2.8 | 2.5 | 4 |
| LSD3755-XX | | GaAlAs | Super Red | 660 | 1.5 | 2.4 | 4 | 7 |
| LSD3753-XX | | GaAsP/GaP | Yellow | 585 | 1.5 | 2.4 | 2.5 | 4 |
| LSD3761-XX | C.A | GaP | Red | 697 | 1.7 | 2.8 | 1.5 | 2.5 |
| LSD3762-XX | | GaP | Green | 565 | 1.7 | 2.8 | 2.2 | 3.8 |
| LSD3764-XX | | GaAsP/GaP | Hi-Eff Red | 635 | 1.7 | 2.8 | 2.5 | 4 |
| LSD3765-XX | | GaAlAs | Red | 660 | 1.7 | 2.8 | 4 | 7 |
| LSD3763-XX | | GaAsP/GaP | Yellow | 585 | 1.5 | 2.4 | 2.5 | 4 |

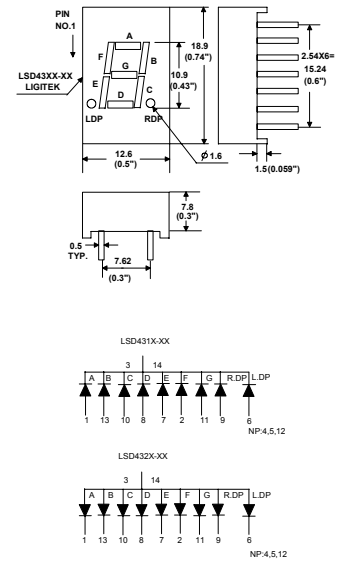


Displays are supplied bin graded and luminous intensity values may be higher in production

LED Displays Numeric 7-segment

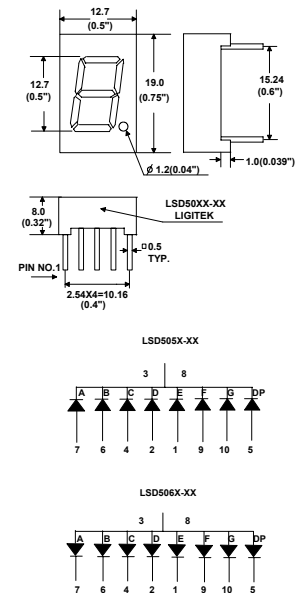
Single Digit Display 0.43"

| PART NO | | CHIP | | λ_P (nm) | Vf(v) @ 20mA | | Iv(mcd) @ 10mA | |
|------------|-----|-----------|------------|---------------------|-----------------|-----|-------------------|-----|
| | | material | emitted | | Min | Max | Min | Typ |
| LSD4311-XX | C.C | GaP | Red | 697 | 1.7 | 2.8 | 0.5 | 0.9 |
| LSD4312-XX | | GaP | Green | 565 | 1.7 | 2.8 | 1.5 | 2.8 |
| LSD4314-XX | | GaAsP/GaP | Hi-Eff Red | 635 | 1.7 | 2.8 | 1.8 | 3 |
| LSD4315-XX | | GaAlAs | Super Red | 660 | 1.5 | 2.4 | 3 | 5.5 |
| LSD4313-XX | | GaAsP/GaP | Yellow | 585 | 1.5 | 2.4 | 1.8 | 3 |
| LSD4321-XX | C.A | GaP | Red | 697 | 1.7 | 2.8 | 0.5 | 0.9 |
| LSD4322-XX | | GaP | Green | 565 | 1.7 | 2.8 | 1.5 | 2.8 |
| LSD4324-XX | | GaAsP/GaP | Hi-Eff Red | 635 | 1.7 | 2.8 | 1.8 | 3 |
| LSD4325-XX | | GaAlAs | Red | 660 | 1.7 | 2.8 | 3 | 5.5 |
| LSD4323-XX | | GaAsP/GaP | Yellow | 585 | 1.5 | 2.4 | 1.8 | 3 |



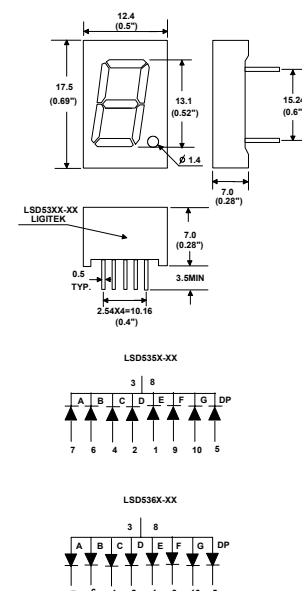
Single Digit Display 0.50"

| PART NO | | CHIP | | λ_P (nm) | Vf(v) @ 20mA | | Iv(mcd) @ 10mA | |
|------------|-----|-----------|------------|---------------------|-----------------|-----|-------------------|-----|
| | | material | emitted | | Min | Max | Min | Typ |
| LSD5051-XX | C.C | GaP | Red | 697 | 1.7 | 2.8 | 0.9 | 1.5 |
| LSD5052-XX | | GaP | Green | 565 | 1.7 | 2.8 | 1.6 | 2.6 |
| LSD5054-XX | | GaAsP/GaP | Hi-Eff Red | 635 | 1.7 | 2.8 | 1.8 | 3.2 |
| LSD5055-XX | | GaAlAs | Super Red | 660 | 1.5 | 2.4 | 3.5 | 6 |
| LSD5053-XX | | GaAsP/GaP | Yellow | 585 | 1.5 | 2.4 | 1.8 | 3.2 |
| LSD5061-XX | C.A | GaP | Red | 697 | 1.7 | 2.8 | 0.9 | 1.5 |
| LSD5062-XX | | GaP | Green | 565 | 1.7 | 2.8 | 1.6 | 2.6 |
| LSD5064-XX | | GaAsP/GaP | Hi-Eff Red | 635 | 1.7 | 2.8 | 1.8 | 3.2 |
| LSD5065-XX | | GaAlAs | Red | 660 | 1.7 | 2.8 | 3.5 | 6 |
| LSD5063-XX | | GaAsP/GaP | Yellow | 585 | 1.5 | 2.4 | 1.8 | 3.2 |



Single Digit Display 0.52"

| PART NO | | CHIP | | λ_P (nm) | Vf(v) @ 20mA | | Iv(mcd) @ 10mA | |
|------------|-----|-----------|------------|---------------------|-----------------|-----|-------------------|-----|
| | | material | emitted | | Min | Max | Min | Typ |
| LSD5351-XX | C.C | GaP | Red | 697 | 1.7 | 2.8 | 0.9 | 1.5 |
| LSD5352-XX | | GaP | Green | 565 | 1.7 | 2.8 | 2.4 | 4 |
| LSD5354-XX | | GaAsP/GaP | Hi-Eff Red | 635 | 1.7 | 2.8 | 3 | 4.5 |
| LSD5355-XX | | GaAlAs | Super Red | 660 | 1.5 | 2.4 | 5 | 8.5 |
| LSD5353-XX | | GaAsP/GaP | Yellow | 585 | 1.5 | 2.4 | 3 | 4.5 |
| LSD5361-XX | C.A | GaP | Red | 697 | 1.7 | 2.8 | 0.9 | 1.5 |
| LSD5362-XX | | GaP | Green | 565 | 1.7 | 2.8 | 2.4 | 4 |
| LSD5364-XX | | GaAsP/GaP | Hi-Eff Red | 635 | 1.7 | 2.8 | 3 | 4.5 |
| LSD5365-XX | | GaAlAs | Red | 660 | 1.7 | 2.8 | 5 | 8.5 |
| LSD5363-XX | | GaAsP/GaP | Yellow | 585 | 1.5 | 2.4 | 3 | 4.5 |

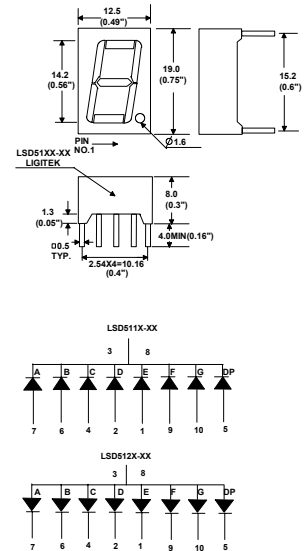


Displays are supplied bin graded and luminous intensity values may be higher in production.

LED Displays Numeric 7-segment

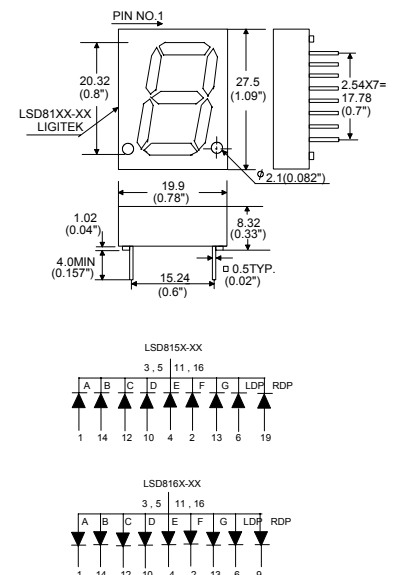
Single Digit Display 0.56"

| PART NO | | CHIP | | λP (nm) | Vf(v) @ 20mA | | Iv(mcd) @ 10mA | |
|------------|-----|-----------|------------|---------------------|-----------------|-----|-------------------|-----|
| | | material | emitted | | Min | Max | Min | Typ |
| LSD5111-XX | C.C | GaP | Red | 697 | 1.7 | 2.8 | 0.9 | 1.5 |
| LSD5112-XX | | GaP | Green | 565 | 1.7 | 2.8 | 2.5 | 4.5 |
| LSD5114-XX | | GaAsP/GaP | Hi-Eff Red | 635 | 1.7 | 2.8 | 3 | 4.5 |
| LSD5115-XX | | GaAlAs | Super Red | 660 | 1.5 | 2.4 | 4.5 | 6.5 |
| LSD5113-XX | | GaAsP/GaP | Yellow | 585 | 1.5 | 2.4 | 3 | 4.5 |
| LSD5121-XX | C.A | GaP | Red | 697 | 1.7 | 2.8 | 0.9 | 1.5 |
| LSD5122-XX | | GaP | Green | 565 | 1.7 | 2.8 | 2.5 | 4.5 |
| LSD5124-XX | | GaAsP/GaP | Hi-Eff Red | 635 | 1.7 | 2.8 | 3 | 4.5 |
| LSD5125-XX | | GaAlAs | Red | 660 | 1.7 | 2.8 | 4.5 | 6.5 |
| LSD5123-XX | | GaAsP/GaP | Yellow | 585 | 1.5 | 2.4 | 3 | 4.5 |



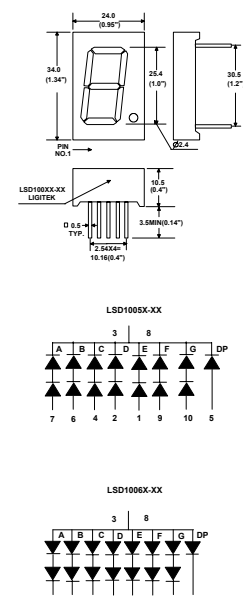
Single Digit Display 0.8"

| PART NO | | CHIP | | λP (nm) | Vf(v) @ 20mA | | Iv(mcd) @ 10mA | |
|------------|-----|-----------|------------|---------------------|-----------------|-----|-------------------|-----|
| | | material | emitted | | Min | Max | Min | Typ |
| LSD8151-XX | C.C | GaP | Red | 697 | 1.7 | 2.8 | 0.9 | 1.5 |
| LSD8152-XX | | GaP | Green | 565 | 1.7 | 2.8 | 2.5 | 4.5 |
| LSD8154-XX | | GaAsP/GaP | Hi-Eff Red | 635 | 1.7 | 2.8 | 3 | 4.5 |
| LSD8155-XX | | GaAlAs | Super Red | 660 | 1.5 | 2.4 | 6 | 10 |
| LSD8153-XX | | GaAsP/GaP | Yellow | 585 | 1.5 | 2.4 | 3 | 4.5 |
| LSD8161-XX | C.A | GaP | Red | 697 | 1.7 | 2.8 | 0.9 | 1.5 |
| LSD8162-XX | | GaP | Green | 565 | 1.7 | 2.8 | 2.5 | 4.5 |
| LSD8164-XX | | GaAsP/GaP | Hi-Eff Red | 635 | 1.7 | 2.8 | 3 | 4.5 |
| LSD8165-XX | | GaAlAs | Red | 660 | 1.7 | 2.8 | 6 | 10 |
| LSD8163-XX | | GaAsP/GaP | Yellow | 585 | 1.5 | 2.4 | 3 | 4.5 |



Single Digit Display 1.0"

| PART NO | | CHIP | | λP (nm) | Vf(v) @ 20mA | | Iv(mcd) @ 10mA | |
|-------------|-----|-----------|------------|---------------------|-----------------|-----|-------------------|-----|
| | | material | emitted | | Min | Max | Min | Typ |
| LSD10051-XX | C.C | GaP | Red | 697 | 1.7 | 2.8 | 1.5 | 2.5 |
| LSD10052-XX | | GaP | Green | 565 | 1.7 | 2.8 | 5 | 8 |
| LSD10054-XX | | GaAsP/GaP | Hi-Eff Red | 635 | 1.7 | 2.8 | 6 | 10 |
| LSD10055-XX | | GaAlAs | Super Red | 660 | 1.5 | 2.4 | 10 | 18 |
| LSD10053-XX | | GaAsP/GaP | Yellow | 585 | 1.5 | 2.4 | 6 | 10 |
| LSD10061-XX | C.A | GaP | Red | 697 | 1.7 | 2.8 | 1.5 | 2.5 |
| LSD10062-XX | | GaP | Green | 565 | 1.7 | 2.8 | 5 | 8 |
| LSD10064-XX | | GaAsP/GaP | Hi-Eff Red | 635 | 1.7 | 2.8 | 6 | 10 |
| LSD10065-XX | | GaAlAs | Red | 660 | 1.7 | 2.8 | 10 | 18 |
| LSD10063-XX | | GaAsP/GaP | Yellow | 585 | 1.5 | 2.4 | 6 | 10 |

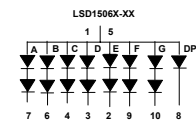
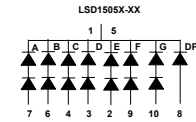
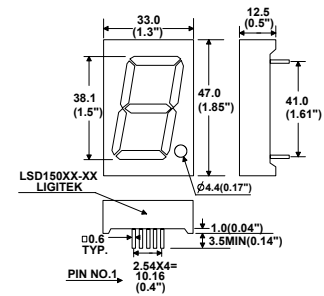


Displays are supplied bin graded and luminous intensity values may be higher in production.

LED Displays Numeric 7-segment

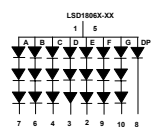
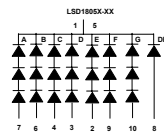
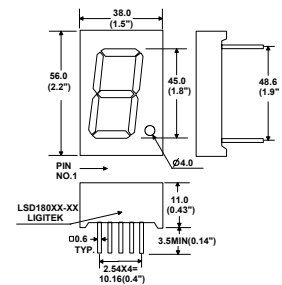
Single Digit Display 1.5"

| PART NO | | CHIP | | λP (nm) | Vf(v) @ 20mA | | Iv(mcd) @ 10mA | |
|-------------|-----|-----------|------------|---------------------|-----------------|-----|-------------------|-----|
| | | material | emitted | | Min | Max | Min | Typ |
| LSD15051-XX | C.C | GaP | Red | 697 | 1.7 | 2.8 | 1.5 | 2.5 |
| LSD15052-XX | | GaP | Green | 565 | 1.7 | 2.8 | 5 | 8 |
| LSD15054-XX | | GaAsP/GaP | Hi-Eff Red | 635 | 1.7 | 2.8 | 6 | 10 |
| LSD15055-XX | | GaAlAs | Super Red | 660 | 1.5 | 2.4 | 10 | 18 |
| LSD15053-XX | | GaAsP/GaP | Yellow | 585 | 1.7 | 2.8 | 6 | 10 |
| LSD15061-XX | C.A | GaP | Red | 697 | 1.7 | 2.8 | 1.5 | 2.5 |
| LSD15062-XX | | GaP | Green | 565 | 1.7 | 2.8 | 5 | 8 |
| LSD15064-XX | | GaAsP/GaP | Hi-Eff Red | 635 | 1.7 | 2.8 | 6 | 10 |
| LSD15065-XX | | GaAlAs | Red | 660 | 1.7 | 2.8 | 10 | 18 |
| LSD15063-XX | | GaAsP/GaP | Yellow | 585 | 1.7 | 2.8 | 6 | 10 |



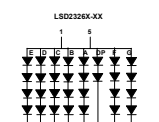
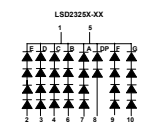
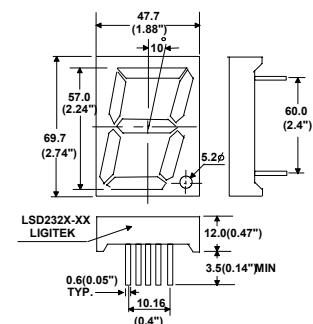
Single Digit Display 1.8"

| PART NO | | CHIP | | λP (nm) | Vf(v) @ 20mA | | Iv(mcd) @ 10mA | |
|-------------|-----|-----------|------------|---------------------|-----------------|-----|-------------------|-----|
| | | material | emitted | | Min | Max | Min | Typ |
| LSD18051-XX | C.C | GaP | Red | 697 | 1.7 | 2.8 | 2.5 | 4 |
| LSD18052-XX | | GaP | Green | 565 | 1.7 | 2.8 | 7 | 12 |
| LSD18054-XX | | GaAsP/GaP | Hi-Eff Red | 635 | 1.7 | 2.8 | 9 | 15 |
| LSD18055-XX | | GaAlAs | Super Red | 660 | 1.5 | 2.4 | 12 | 20 |
| LSD18053-XX | | GaAsP/GaP | Yellow | 585 | 1.7 | 2.8 | 9 | 15 |
| LSD18061-XX | C.A | GaP | Red | 697 | 1.7 | 2.8 | 2.5 | 4 |
| LSD18062-XX | | GaP | Green | 565 | 1.7 | 2.8 | 7 | 12 |
| LSD18064-XX | | GaAsP/GaP | Hi-Eff Red | 635 | 1.7 | 2.8 | 9 | 15 |
| LSD18065-XX | | GaAlAs | Red | 660 | 1.7 | 2.8 | 12 | 20 |
| LSD18063-XX | | GaAsP/GaP | Yellow | 585 | 1.7 | 2.8 | 9 | 15 |



Single Digit Display 2.3"

| PART NO | | CHIP | | λP (nm) | Vf(v) @ 20mA | | Iv(mcd) @ 10mA | |
|-------------|-----|-----------|------------|---------------------|-----------------|-----|-------------------|-----|
| | | material | emitted | | Min | Max | Min | Typ |
| LSD23251-XX | C.C | GaP | Red | 697 | 1.7 | 2.8 | 4.8 | 8 |
| LSD23252-XX | | GaP | Green | 565 | 1.7 | 2.8 | 10 | 18 |
| LSD23254-XX | | GaAsP/GaP | Hi-Eff Red | 635 | 1.7 | 2.8 | 10 | 18 |
| LSD23255-XX | | GaAlAs | Super Red | 660 | 1.5 | 2.4 | 18 | 30 |
| LSD23253-XX | | GaAsP/GaP | Yellow | 585 | 1.7 | 2.8 | 10 | 18 |
| LSD23261-XX | C.A | GaP | Red | 697 | 1.7 | 2.8 | 4.8 | 8 |
| LSD23262-XX | | GaP | Green | 565 | 1.7 | 2.8 | 10 | 18 |
| LSD23264-XX | | GaAsP/GaP | Hi-Eff Red | 635 | 1.7 | 2.8 | 10 | 18 |
| LSD23265-XX | | GaAlAs | Red | 660 | 1.7 | 2.8 | 18 | 30 |
| LSD23263-XX | | GaAsP/GaP | Yellow | 585 | 1.7 | 2.8 | 10 | 18 |

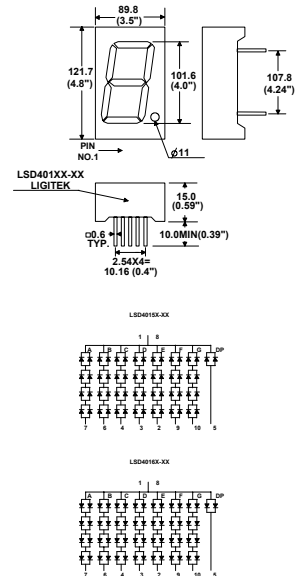


Displays are supplied bin graded and luminous intensity values may be higher in production.

LED Displays Numeric 7-segment

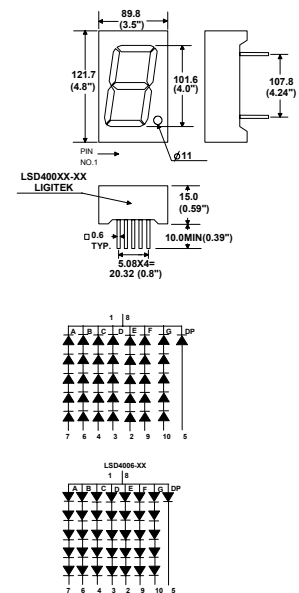
Single Digit Display 4.0"

| PART NO | | CHIP | | λP (nm) | Vf(v) @ 20mA | | Iv(mcd) @ 10mA | |
|-------------|-----|-----------|------------|---------------------|-----------------|------|-------------------|------|
| | | material | emitted | | Min | Max | Min | Typ |
| LSD40152-XX | C.C | GaP | Green | 565 | 6.8 | 11.2 | 12.8 | 21.5 |
| LSD40154-XX | | GaAsP/GaP | Hi-Eff Red | 635 | 6.8 | 11.2 | 12.8 | 21.5 |
| LSD40155-XX | | GaAlAs | Super Red | 660 | 6 | 9.6 | 18 | 31 |
| LSD40156-XX | | GaAlAs | Ultra Red | 660 | 6 | 9.6 | 26 | 43 |
| LSD40153-XX | | GaAsP/GaP | Yellow | 585 | 6.8 | 11.2 | 12.8 | 21.5 |
| LSD40162-XX | C.A | GaP | Green | 565 | 6.8 | 11.2 | 12.8 | 21.5 |
| LSD40164-XX | | GaAsP/GaP | Hi-Eff Red | 635 | 6.8 | 11.2 | 12.8 | 21.5 |
| LSD40165-XX | | GaAlAs | Super Red | 660 | 6 | 9.6 | 18 | 31 |
| LSD40166-XX | | GaAlAs | Ultra Red | 660 | 6 | 9.6 | 26 | 43 |
| LSD40163-XX | | GaAsP/GaP | Yellow | 585 | 6.8 | 11.2 | 12.8 | 21.5 |



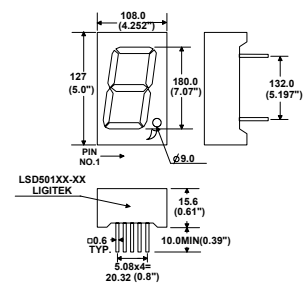
Single Digit Display 4.0"

| PART NO | | CHIP | | λP (nm) | Vf(v) @ 20mA | | Iv(mcd) @ 10mA | |
|-------------|-----|-----------|------------|---------------------|-----------------|-----|-------------------|-----|
| | | material | emitted | | Min | Max | Min | Typ |
| LSD40051-XX | C.C | GaP | Red | 697 | 8.5 | 14 | 4.8 | 8 |
| LSD40052-XX | | GaP | Green | 565 | 8.5 | 14 | 10 | 18 |
| LSD40054-XX | | GaAsP/GaP | Hi-Eff Red | 635 | 8.5 | 14 | 10 | 18 |
| LSD40055-XX | | GaAlAs | Super Red | 660 | 7.5 | 12 | 18 | 30 |
| LSD40053-XX | | GaAsP/GaP | Yellow | 585 | 8.5 | 14 | 10 | 18 |
| LSD40061-XX | C.A | GaP | Red | 697 | 8.5 | 14 | 4.8 | 8 |
| LSD40062-XX | | GaP | Green | 565 | 8.5 | 14 | 10 | 18 |
| LSD40064-XX | | GaAsP/GaP | Hi-Eff Red | 635 | 8.5 | 14 | 10 | 18 |
| LSD40065-XX | | GaAlAs | Red | 660 | 7.5 | 12 | 18 | 30 |
| LSD40063-XX | | GaAsP/GaP | Yellow | 585 | 8.5 | 14 | 10 | 18 |



Single Digit Display 5.0"

| PART NO | | CHIP | | λP (nm) | Vf(v) @ 20mA | | Iv(mcd) @ 10mA | |
|-------------|-----|-----------|------------|---------------------|-----------------|-----|-------------------|-----|
| | | material | emitted | | Min | Max | Min | Typ |
| LSD50152-XX | C.C | GaP | Green | 565 | 17 | 28 | 39 | 65 |
| LSD50154-XX | | GaAsP/GaP | Hi-Eff Red | 635 | 17 | 28 | 39 | 65 |
| LSD50155-XX | | GaAlAs | Super Red | 660 | 15 | 24 | 50 | 85 |
| LSD50156-XX | | GaAlAs | Ultra Red | 660 | 15 | 24 | 100 | 170 |
| LSD50153-XX | | GaAsP/GaP | Yellow | 585 | 17 | 28 | 39 | 65 |
| LSD50162-XX | C.A | GaP | Green | 565 | 17 | 28 | 39 | 65 |
| LSD50164-XX | | GaAsP/GaP | Hi-Eff Red | 635 | 17 | 28 | 39 | 65 |
| LSD50165-XX | | GaAlAs | Super Red | 660 | 15 | 24 | 50 | 85 |
| LSD50166-XX | | GaAlAs | Ultra Red | 660 | 15 | 24 | 100 | 170 |
| LSD50163-XX | | GaAsP/GaP | Yellow | 585 | 17 | 28 | 39 | 65 |

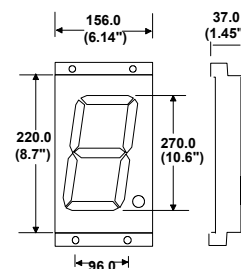


Displays are supplied bin graded and luminous intensity values may be higher in production.

LED Displays Numeric 7-segment

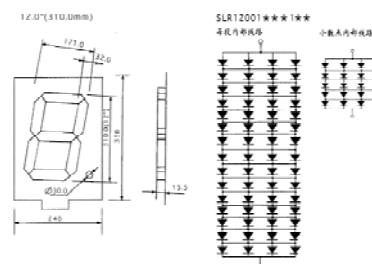
Single Digit Display 8.7"

| PART NO | | CHIP | | λ_P (nm) | Vf(v) @ 20mA | | Iv(mcd) @ 10mA | |
|-------------|------|----------|-----------|---------------------|-----------------|-----|-------------------|-----|
| | | material | emitted | | Min | Max | Min | Typ |
| LSD80057-XX | C.C | GaAlAs | Super Red | 660 | 7.5 | 12 | 50 | 85 |
| | | | | | | | | |
| LSD80058-XX | C.C | AllnGaP | Yellow | 595 | 8.5 | 14 | 50 | 85 |
| | | | | | | | | |
| LSD80067-XX | C.A. | GaAlAs | Super Red | 660 | 7.5 | 12 | 50 | 85 |
| | | | | | | | | |
| LSD80068-XX | C.A. | AllnGaP | Yellow | 595 | 8.5 | 14 | 50 | 85 |
| | | | | | | | | |



Single Digit Display 12.0"

| PART NO | | CHIP | | λ_P (nm) | Vf(v) @ 20mA | | Iv(mcd) @ 10mA | |
|-------------|------|----------|-----------|---------------------|-----------------|-----|-------------------|-------|
| | | material | emitted | | Min | Max | Min | Typ |
| LSD12001SRA | C.A. | GaAlAs | Super Red | 660 | 28.5 | 33 | 1,600 | 2,000 |
| LSD12001SRA | | GaAlAs | Ultra Red | 660 | 28.5 | 33 | 2,600 | 3,400 |
| | | | | | | | | |
| | | | | | | | | |



Displays are supplied bin graded and luminous intensity values may be higher in production.

Notes: Display face and segment colours are denoted in the suffix **xx**

Reflector Surface

- 0 Original
- 1 Black
- 2 Grey
- 3 Red
- 4 Orange

Segment Colour

- 0 White Diffused
- 1 Red Diffused
- 2 Green Diffused
- 3 Yellow Diffused
- 4 Orange Diffused

Low current options are available add suffix T2

Additional colours and multi-colour versions may also be specified. M.O.Q.'s may apply

See additional data sheet for multi-digit types