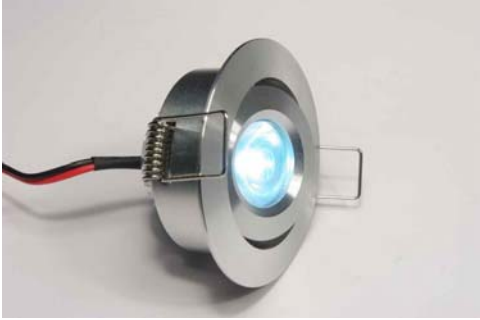


LED Lighting

Single LED Down-lighter PFD52G-3W-12v



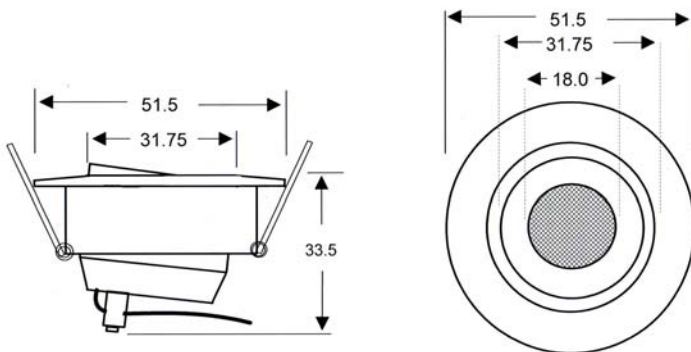
Features

- No additional fittings required
- Powered by Cree 3W LED
- Integral driver for 12v Constant Voltage operation
- Gimballed construction
- Tough and Durable machined aluminium housing

Description

The PFD52G-3 is a compact LED fitting suited to down-lighting applications. Designed with excellent thermal properties and integral drive circuit. Typical applications include Retail display lighting and task lighting. The LED down-light has a built in tilting gimble to give a wide range of adjustment.

Dimensions



Hole cut-out diameter 42.0mm

Notes:

PFD52G-3 Suffix xx denotes colour & beam angle

Use in conjunction with low voltage constant voltage drive systems

These units are designed for low voltage dc operation and must not be connected to ac mains

Luminous Flux values quoted are typical. Please contact our office for the latest luminous intensity yields

Specifications may be subject to change without notice

LIGHTING PERFORMANCE				
Model	Light Source	LED Qty	Lumen Output	Expected Life
Single -Colour	Cree 3W	1	140@ 700mA	50,000 hrs+
<i>NB: Lumen values quoted based on Cool White (6500°K)</i>				

OPERATING DETAILS		
Model	Input Power	Ambient Temp Range
Single -Colour	12v 250mA	-10 to +40°C

INPUT DATA				
Model	Drive Current	Voltage	Power Supply	Connection
Single -Colour	350mA	12vDC	Constant Voltage	Flying lead 500mm

PHYSICAL DETAILS			
Model	Mounting Type	Finish	Ingress Protection
Single -Colour	Spring Clip	Matt Silver Anodised	N/A

OPTIONS	
Model	Optics
Single -Colour	15, 30 degrees

COLOURS	
Model	Single LED Colours
Single -Colour	Red, Green, Blue, Amber, Cool White, Neutral White, Warm White

RECOMMENDED DRIVERS	
Model	
D36CC700-4-14IP67	
D18CC350-4-14IP67	

Distribution box



PSU-SLTB6 Splitter box facilitates the connection of 1 to 6 fittings in parallel. Socket housing measures 87x26x13mm with 0.5 metre cable