

Neon Flex Top View Vertical bend

Features

- Flexible LED light source
- Top View Vertical bend
- High Performance SMD emitters
- 16x15mm Top view
- Easy to cut at 50mm /62.5mm intervals
- Wide 180° angle of emission
- IP67
- 3 Year Warranty



Applications

POS Display equipment, signage, accent & decorative lighting

Maximum Electrical Characteristics Ta=25°C

Parameter	24VDC	Unit
Input Voltage	24v Typical	VDC
CRI	>90	Ra
Power consumption / metre (max)	5W, 10W, 15W	W/m
Operating Temp	-25 to +45°C	°C

White emission Optical Characteristics Ta=25°C

Part Number	Emitted colour	Wavelength /CCT (typ)	Lumens/m		
			Power 5W/m (max length 5m)	Power 10W/m (max length 5m)	Power 15W/m (max length 5m)
PNT-1615H-W21-24V-x	Extra Warm White	2000K - 2200K	242	468	659
PNT-1615H-W27-24V-x	Warm White	2600K – 2800K	285	552	771
PNT-1615H-W30-24V-x	Warm White	2900K - 3100K	286	539	766
PNT-1615H-W35-24V-x	Natural/Warm White	3400K – 3700K	300	583	815
PNT-1615H-W40-24V-x	Natural White	3800K – 4300K	294	573	807
PNT-1615H-W50-24V-x	Daylight White	4800K – 5300K	298	570	794
PNT-1615H-W60-24V-x	Pure White	5900K – 6400K	294	572	782

Notes:

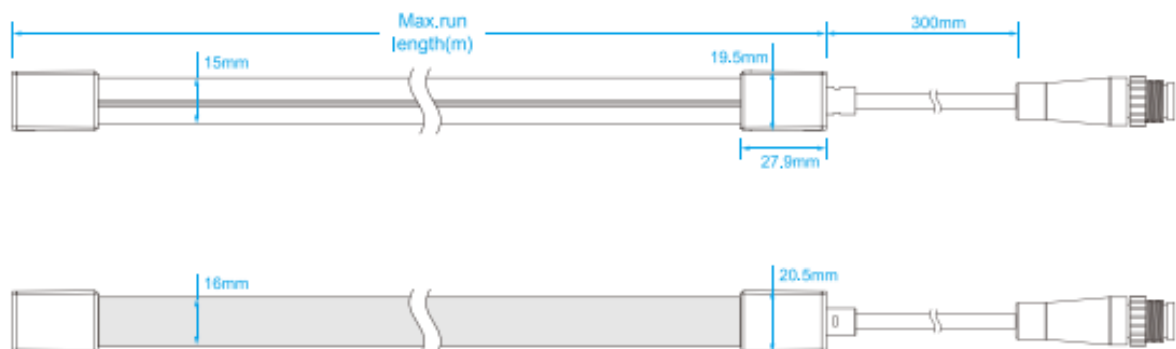
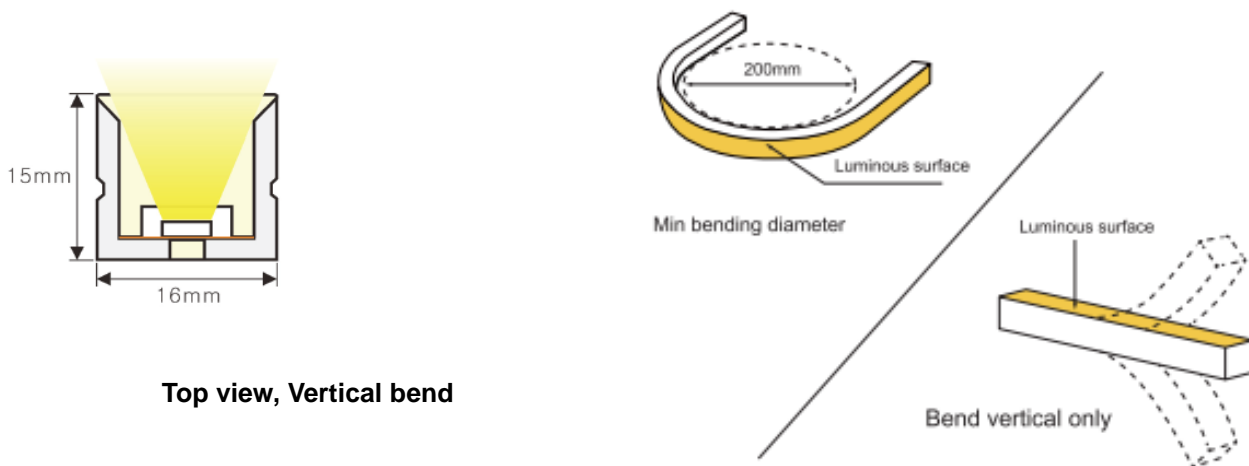
X denotes suffix -5W for low power -10W for mid power -15W for high power
Primary colours R, G, B, Y and Pink also available
Constant current versions facilitate longer lengths

Multi-colour specifications

Part Number	Emitted colour	Wavelength /CCT (typ)	Lumens/m		
			Power 5W/m (max length 5m)	Power 10W/m (max length 5m)	Power 15W/m (max length 5m)
PNT-1615H-RGB-24V-x	RGB		148	268	323
PNT-1615H-RGBW-24V-x	RGBW		190	373	496

Cuttable at 62.5mm intervals

Dimensions



Cable entry options

Injection plug

Front Cable Entry:
The cable could be hidden in all directions by the flexible design.



Solderless end cap



Silicone end cap



Side Cable Entry:
The cable could be perfectly hidden to achieve seamless light connection.



Bottom Cable Entry:
The cable could be perfectly hidden to achieve seamless light connection.

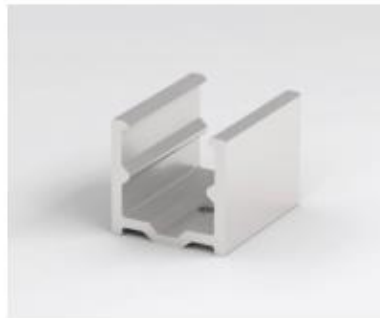


Mounting Accessories

Stainless Steel Mounting clips



Aluminium Mounting clips



Aluminium Profile





T +44 (0) 1942 671122 E sales@plusopto.co.uk W www.plusopto.co.uk

B13 Derwent Court William Way Moss Industrial Estate Leigh Lancashire WN7 3PT

Handling notes:

Ensure that the correct low voltage dc power supply is matched to the flexible strip specification

Avoid repeated bending of the strip as this will damage the circuit and components

Avoid excess pressure on the strip as this may result in damage and latent failures.

When cutting, the ingress protection will be compromised please ensure that the assembly is re-sealed accordingly in order to maintain the IP rating

Installation notes:

To achieve a consistent luminous effect, each 5 metre length should be connected to the power source.

To ensure long life we recommend that the strip is kept as cool as possible and environments where the temperature exceeds 40°C should be avoided

Drive & Control:

For control solutions please refer to our range of controllers and drive options which include DMX, RF Wireless, WiFi. More information may be found at <http://www.plusopto.co.uk/led-controllers.html>

Specifications may be subject to change without notice