

LED Module

PWM5132-4YL5050W-12v/IP65



Designed for channel letter illumination in signage applications, the PWM5132 module provides bright and even illumination. Supplied in pre-wired chains of 20 pcs with 78mm link wires. Fixing is facilitated by a 3.6mm hole and 3M adhesive tape. Suitable for 8 ~18cm depth signs such as channel letters, metal letters, light boxes, decoration, etc

Features

- Low Voltage operation
- Low Current Consumption
- No heat generated
- Waterproof to IP65
- Choice of colours
- Lightweight construction

ELECTRICAL SPECIFICATIONS	
Parameter	Rating
Input Voltage	12vdc
Current Consumption	80mA/module
Power Consumption	0.96/module 1.44W/RGB module

LIGHTING PERFORMANCE	
Lifetime	>20,000 hours
Viewing angle	120°

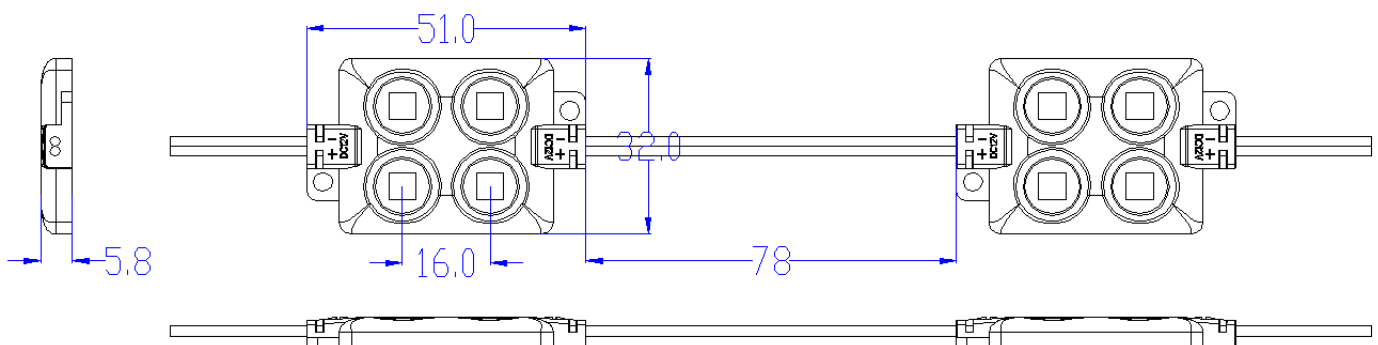
ENVIRONMENTAL	
Parameter	Rating
Operating Temp	-20°C to +50°C
Storage Temp	-25°C to +60°C

MECHANICAL DETAIL	
Dimensions	51x32x5.8mm
Weight	23g
Environmental	IP65
Approvals	CE and UL

Specifications / String (20pcs)

PART NUMBER	COLOUR	CCT	VOLTAGE	CURRENT (module)	POWER (module)	LUMINOUS FLUX (module)
PWM5132-4YL5050CW-12v	Cool White	10000~12000K	12vDC	80mA x20 1.6A	0.96W x 20 19.2W	100~140 lm
PWM5132-4YL5050PW-12v	Pure White	6000~6500K				100~140 lm
PWM5132-4YL5050WW-12v	Warm White	3000~3300K				100~140 lm
PWM5132-4YL5050RGB-12v	RGB			60mA	1.44W	

Module Dimensions



Notes:

Use in conjunction with constant voltage 12v max LED drivers
These modules are designed for low voltage operation and must not be connected directly to ac mains supply
Luminous flux values quoted are typical. Please contact our office for the latest intensity yields

Specifications may be subject to change without notice